



UNIVERSITY OF  
**RIO GRANDE**  
AND RIO GRANDE COMMUNITY COLLEGE











Rio's contemporary 190-acre campus is located in the beautiful rolling hills of southeastern Ohio, offering students the safety associated with a small town. The campus is an oasis of learning, innovation, and technology in the region. The institution's strengths lie in a faculty of teachers/scholars who are dedicated to both the academic and humanistic growth of every student, programs that are academically challenging, and numerous opportunities for extracurricular involvement. As America's unique private/public institution of higher education, Rio's mission is to provide learners the opportunity to attain a high-quality, high-value education. Our personalized, learner-centered environment promotes successful lives, careers, and responsible citizenship.




**Learn more about Rio!**



Students can choose from over 80+ academic programs, including certificate programs, associate's, bachelor's, and master's degrees. Custom majors and minors are also available for those students whose needs differ from traditional program offerings. A Rio Grande education is student centered, and provides an effective balance of practical training and the liberal arts. Rio students also have numerous opportunities available to study abroad and participate in internships.





Rio has more than 2,400 students with a 15:1 student to faculty ratio.



**Master's of Education Degree Programs:**  
Athletic Coaching Leadership-MEd

**Bachelor Degrees**

***Four-Year Major Program Concentrations:***  
(Minor Required)

Biology  
Business Management  
Computer Science  
History  
Mathematics  
Psychology  
Sport & Exercise Studies

***Four-Year Comprehensive Major Program Concentrations:*** (No Minor Required)

Applied Healthcare Admin. 2+2  
Biochemistry  
Diagnostic Medical Sonography  
Environmental Science  
Individualized Degree Program (*requires Academic Policy approval*)  
Industrial Technology  
Liberal Studies  
Neuroscience  
Nursing\*  
Professional Communications  
Public Health  
Social Work  
Technical Studies  
Visual Art  
Wildlife Conservation

***Four-Year Minor Programs:***

Accounting  
Art  
Banking  
Biology  
Business Management  
Certified Financial Planning  
Computer Science  
English  
Environmental Science  
Healthcare Administration  
History  
Information Technology  
Marketing  
Mathematics  
Political Science  
Professional Communications  
Psychology  
Sensory Impairment

**Education: Licensures**

Primary PK-5/Primary PK-5 Intervention Specialist  
Primary PK-5/Intervention Specialist K-12  
Intervention Specialist K-12

***Middle Childhood (Grades 4-9) Major requiring two areas of concentrations:***

Mid Child: Lang Arts/Soc. Studies  
Mid Child: Lang Arts/Math  
Mid Child: Lang Arts/Science  
Mid Child: Soc. Studies/Math  
Mid Child: Soc. Studies/Science  
Mid Child: Math/Science



*Adolescent to Young Adult (Grades 7-12) Major requiring one of the following concentrations:*

AYA: Integrated Language Arts

AYA: Integrated Mathematics

AYA: Integrated Social Studies

### **Two-Year Degree Program Concentrations:**

Biology

Business Management

Career-Technical Program OH

Chemistry

Cybersecurity

Diagnostic Medical Sonography: General\*

Diagnostic Medical Sonography: Cardiovascular\*

English

Environmental Science

General Studies

History

Industrial Automation

Industrial Machinery

IT: Network Systems

Mathematics

Meat Science

Medical Assistant

Nursing\*

Political Science

Pre-Engineering

Prekindergarten

Professional Communications

Psychology

Radiologic Technology\*

Respiratory Therapy\*

Social Services

Sport & Exercise Studies

Technical Studies

Visual Art

Welding

### **Certificate Programs:**

Accounting

Career-Technical Licensure

Certified Financial Planning

Healthcare Administration

Information Technology

Marketing

Medical Coding & Billing

Professional Banking

Small Business Management

Welding

*\* Additional application and requirements needed*

### **Programs Coming Soon:**

Master of Education in Educational Leadership

Bachelor of Science in Agriculture Education

Associate of Arts in Early Childhood Education

Associate of Arts in Middle Childhood Education

Agricultural Business Management Certificate

Certificate in Career-Technical Teaching

(12 hour, short term)

Certificate in Career-Technical

Teaching (30 hour)

Certificate in Industrial Mechanical

Maintenance

Certificate in Industrial Electricity

General Education Certificate





## **UNIQUE OVERLY**

### Cardiovascular Sonography

As a single mother, going back to school wasn't an easy decision, but it was the right one—for me and for my son. At Rio, I've found more than just an education; I've found unwavering support, flexibility, and people who genuinely want to see me succeed. This experience is helping me build a better future, not only by preparing me for a career I'm passionate about, but by showing my son what resilience and hope look like and how a strong support system can make all the difference.





## **INDUSTRIAL TECHNOLOGY**

**Bachelor of Science Degree in  
Industrial Technology**





2025

## HONORS PROGRAM

The Honors Program engages gifted students through a specialized curriculum.







435 students earned credentials during the 2024-25 school year, leading to our largest graduation in recorded history.



# TUITION

2025-2026 ACADEMIC YEAR



Scan for the  
most up-to-date  
tuition cost

COST

TUITION*	FRESHMAN 100	SOPHOMORE 200	JUNIOR 300	SENIOR 400	YEARLY AVERAGE*
4-county Ohio Residents	\$5,280	\$5,280	\$20,000	\$20,000	\$12,640
Ohio Residents	\$6,180	\$6,180	\$20,000	\$20,000	\$13,090
Kentucky Residents (Boyd, Carter, Fleming, Greenup, Lawrence, Mason, Rowan, Elliot, and Lewis Counties only)	\$6,180	\$6,180	\$20,000	\$20,000	\$13,090
West Virginia Residents	\$9,900	\$9,900	\$20,000	\$20,000	\$14,950
Out-of-State	\$20,000	\$20,000	\$20,000	\$20,000	\$20,000

Bachelor of Nursing Program tuition is \$200 per credit hour.

*\*Calculations based on 30 credit hours per academic year. Room, board, fees, books, grants, or scholarships are not included and are subject to change without notice.*

# AFFORDABILITY

Rio prides itself on making a quality education affordable. We offer some of the lowest tuition rates in the state for both two- and four-year degrees.

Every year, we award an average of \$1.6 million in private donor scholarships.

Additionally, over 85% of our students are PELL eligible, and when you combine that with the hundreds of scholarships that are available to Rio students, the actual cost of tuition could be much lower!

**Learn more by emailing us at [finaid@rio.edu](mailto:finaid@rio.edu)**

Financial Aid School Code for FAFSA is 003116



**Scan for  
Financial Aid and  
FAFSA information**





**TRINITY HALL**



Scan for Housing  
Application



Scan for Housing  
Guide

# LIVING ON CAMPUS

Our on-campus housing isn't just a place to stay – it's a vibrant community that enhances your university experience. At Rio, we prioritize your safety and well-being, providing a secure environment that fosters both community engagement and individual independence. Research indicates that living on campus positively correlates with academic success, making this a valuable opportunity for personal growth and the formation of lifelong friendships.

Our Room and Board options allow our students to pick a plan that is best for their individual needs and wants. All plans include essential utilities such as electric, cable, and internet. Additionally, you can enjoy the peace of mind knowing that there won't be any financial impact if your roommate decides to leave mid-year. Embrace the opportunity for personal and academic growth in a supportive and inclusive on-campus community at Rio!

Room & Board Choices (Annualized)					
Room Choice				Board Choice	
Hall	Room Type	Room Type Cost		Meal Plan	Meal Plan Cost
Traditional-Style  Boyd, Davis, Holzer, Wellness	Traditional Double/Quad	\$6,300	+	19 (week)	\$4,700
	Super Double/Suite	\$7,300			
	Traditional Single	\$7,500			
	Super Single	\$7,700			
Apartment-Style  Trinity	Double	\$8,200	+	19 (week)	\$4,700
	Single	\$9,200		14 (week)	\$4,400
				10 (week)	\$4,100

COST







# CAMPUS LIFE

Whether you are a traditional or non-traditional student, resident or commuter, there is a place for you to get involved outside of the classroom. The Office of Student Affairs can connect students with opportunities including student organizations, leadership development, and campus events and traditions.

Beyond our competitive athletic teams, Rio has numerous student groups on campus, including extracurricular, co-curricular, and Greek organizations. Joining in on the fun is easy at Rio, whether you are a singer, fisher, movie buff, gamer – or want to try these out for the first time. We aim to be inclusive of all student interests through our programming.



**Scan for  
more info on  
campus life**



# GET INVOLVED

## ACADEMIC ORGANIZATIONS & HONOR SOCIETIES


- American Marketing Association
- Phi Theta Kappa Honor Society
- Psychology Club
- Social Work Student Council
- STEM Club
- Wildlife Society

## EXTRA-CURRICULAR ORGANIZATIONS

- All Greek Council
- Alpha Chi Nu (Archon)
- Alpha Mu Beta
- Alpha Sigma Phi
- Art Club
- Association of Student Athletes
- Chi Omega Alpha
- Cornhole Club
- Delta Theta
- Grande Chorale
- Hiking Club
- Pickleball Club
- Rio Game Club
- Symphonic Band
- Tau Kappa Epsilon
- Title IX Student Advisory Board

## COMMUNITY ORGANIZATIONS

- Reach Out on Campus
- S.E.A.R.C.H.

A young woman with long brown hair, wearing a white beanie, a white turtleneck with 'FLORIDA' printed on it, a blue denim vest, black leggings, and white sneakers, stands on a wooden boardwalk. She is leaning against a wooden railing and smiling at the camera. The background shows a vast blue ocean under a sky with scattered white clouds. A small, dark rocky island is visible in the distance on the left.

*"Studying abroad was an unforgettable experience. From experiencing different cultures to visiting historical castles, I was able to build a global perspective as well as lifelong memories."*

*— Nalah Kirkendall*

## STUDY ABROAD

The Madog Center for Welsh Studies offers students the opportunity to "foster understanding and appreciation for Welsh heritage and contemporary Welsh culture" through a variety of activities throughout the year.

Rio Grande has an exchange partnership with the University of Wales Trinity Saint David in the United Kingdom through which students have the opportunity to study abroad during the fall semester. Rio Grande financial aid and scholarships apply for those who participate.





**WILDLIFE CONSERVATION**  
**Bachelor of Science**







# STUDENT SUPPORT

## ACCESSIBILITY SERVICES

The Office of Accessibility at the University of Rio Grande and Rio Grande Community College is committed to serving and advocating for students with documented disabilities. It is the practice of URG and RGCC's Office of Accessibility to ensure that an inclusive and accessible experience is available to all students, through the use of reasonable accommodations in accordance with the ADA and Section 504. The Office of Accessibility views disabilities as a form of diversity, and with compassion and respect works with students and the campus community to create an equitable educational experience.

## FREE TUTORING

The Michael V. and Flora Jenkins Academic Center is dedicated to providing free academic support services, such as tutoring, writing assistance, and basic academic skills instruction to students enrolled at the University of Rio Grande and Rio Grande Community College. Two full time learning support specialists are available to assist students with their academic studies. The Jenkins Academic Center's tutoring program offers professional as well as peer tutoring and is nationally certified by the College Reading and Learning Association at both Level I/ Regular and Level II/Advanced.



## MENTAL HEALTH

As a student, you may experience a range of issues that can cause barriers to learning, such as strained relationships, increased anxiety, alcohol/drug problems, feeling down, difficulty concentrating and/ or lack of motivation. These mental health concerns or stressful events may lead to diminished academic performance or reduce your ability to participate in daily activities. We offer confidential counseling services to all students regardless of personal circumstance so that you can thrive and succeed as a Rio student.

## HEALTH SERVICES

Health Services is a nurse-directed basic first aid and minor short-term illness clinic where students can come when they are ill, injured, or need assistance in attaining or maintaining their health and well-being. All services are free of charge and include, but are not limited to, minor first aid treatment and testing for strep, TB, glucose, and influenza.



ARCHERY

# ATHLETICS

Rio Grande has enjoyed a rich heritage of success from the “Bevo” Francis era to the current group of RedStorm athletes. Rio Grande continues to produce championship caliber teams and athletes.

The relationship between academics and athletics at the University of Rio Grande is based on mutual support, respect, and a commitment to: provide high quality programs that reflect positively on the institution; teach the importance of striving for excellence in every endeavor; advance the mission of the institution; and promote the five core values as spelled out by the NAIA Champions of Character initiatives.





**Men's programs include:**

BASEBALL\*  
BASKETBALL\*  
BOWLING\*  
CROSS COUNTRY  
FOOTBALL  
GOLF  
RUGBY  
SOCCER\*  
INDOOR TRACK AND FIELD  
OUTDOOR TRACK AND FIELD  
VOLLEYBALL\*  
WRESTLING

**Co-ed programs include:**

ARCHERY  
BASS FISHING  
CHEERLEADING  
DANCE  
ESPORTS  
MARCHING BAND

**Women's programs include:**

BASKETBALL\*  
BOWLING\*  
CROSS COUNTRY  
GOLF  
SOCCER\*  
SOFTBALL\*  
INDOOR TRACK AND FIELD  
OUTDOOR TRACK AND FIELD  
VOLLEYBALL\*  
WRESTLING

*\* Reserve Teams  
in these sports*

**RIOREDSTORM.COM**





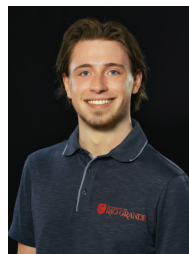


The Office of Admissions team works with you throughout the enrollment process. We are here to guide and assist you with any questions or concerns you have. Please contact your Admissions Representative if you have any questions.

ADMISSIONS STAFF



**Kristie French**  
*Director of Admissions*  
740.245.7191  
kfrench@rio.edu



**Garrett McNerlin**  
*Admissions Representative*  
740.245.7220  
gmcnerlin@rio.edu  
Territory: Western Ohio,  
Kentucky, and Eastern  
Indiana



**Jessica DeWeese**  
*Assistant Director of  
Admissions*  
740.245.7211  
jessicaw@rio.edu  
Territory: Gallia, Jackson,  
Meigs, and Vinton Counties



**Lucas Chess**  
*Admissions Representative*  
740.245.7524  
lchess@rio.edu  
Territory: Eastern Ohio, West  
Virginia, and Western Pennsylvania



**Marinda Cook**  
*Admissions Representative*  
740.245.7425  
mcook@rio.edu  
Transfer Student Admissions  
Campus Visit Coordinator



**Alex Cain**  
*Admissions Representative*  
740.245.7207  
acain@rio.edu  
Territory: Central Ohio



**Brandon Bias**  
*Deputy Director of Athletic  
Recruitment*  
740.853.1235  
bbias@rio.edu



**Jennifer Cremeens-King**  
*Admissions Specialist*  
740-245-7208  
admissions@rio.edu



## MEIGS CENTER

**Michelle Bird**

**Director**

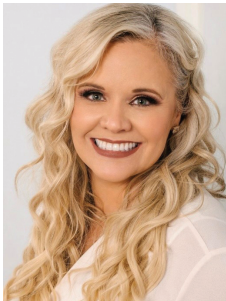
740.992.1880

mbird@rio.edu

42377 Charles Chancey Dr.

Pomeroy, OH 45769

*Scan the QR code  
to schedule an appointment  
with Michelle*



## JACKSON CENTER

**Kristen Mershon**

**Director**

740.288.0284

kmershon@rio.edu

980 E. Main Street

Jackson, OH 45640

*Scan the QR code  
to schedule an appointment  
with Kristen*



## MCARTHUR CENTER

**Misty Napier**

**Director**

740.245.7620

mnapier@rio.edu

307 West High Street

McArthur, OH 45651

*Scan the QR code  
to schedule an appointment  
with Misty*



## PIKE CENTER

**Tracy Rice**

**Director**

740.245.7150

trice@rio.edu

225 West Street

Piketon, OH 45661

*Scan the QR code  
to schedule an appointment  
with Tracy*





# WHAT'S NEXT?

## PLAN A CAMPUS VISIT TO SEE FOR YOURSELF

The best way to see if Rio Grande is right for you is to visit the campus. Individual visits are available to meet each student's interests and needs. Campus visits are available Monday through Friday. A typical visit includes a meeting with an admissions representative and a tour of campus by a student ambassador. You can also meet with a faculty member, coach, or sit in on a class.

Please contact the Admissions Office at 740-245-7208 to arrange a visit or sign up for a visit at [www.rio.edu/admissions](http://www.rio.edu/admissions).



**SCAN TO  
SCHEDULE  
A VISIT AND OR  
TO REGISTER FOR  
AN OPEN HOUSE**

**OPEN HOUSE DATES:** Thursday, November 20, 2025, and  
Thursday, February 26, 2026.

# READY TO APPLY?



**SCAN TO  
APPLY TODAY!**

The first step toward enrolling at Rio Grande is completing your application. Because Rio Grande has an open-enrollment admissions process, we do not require a specific GPA or standardized testing score for general admission. Students wishing to receive consideration are required to submit:

- A completed application using the QR code or visit: [rio.edu/apply](http://rio.edu/apply)
- Official high school transcript or GED
- Official transcripts from all colleges/universities attended
- Official results from the American College Test (ACT) or Scholastic Aptitude Test (SAT) is optional for admission

# GET READY FOR RIO

## CHECKLIST

- ☐ Submit your general application to Rio
- ☐ Request for your high school and/or college transcripts to be sent to Rio
- ☐ Submit any additional applications for your program/major
- ☐ Fill out FAFSA and apply for Rio Scholarships (QR code on Page 13)
- ☐ Schedule an appointment with your Student Success Coach when new student registration opens
- ☐ Schedule classes, set up Rio email, schedule orientation
- ☐ Apply for housing (QR code on Page 14)
- ☐ Order books and other supplies for your classes
- ☐ Pack and move on campus
- ☐ Get your parking pass and student ID from Campus Police
- ☐ Attend Welcome Weekend

Success Coach: \_\_\_\_\_

Student ID: \_\_\_\_\_

Rio Email: \_\_\_\_\_

Rio Password: \_\_\_\_\_

FAFSA Username: \_\_\_\_\_

FAFSA Password: \_\_\_\_\_





[rio.edu/tour](https://rio.edu/tour)



URioGrande